



Company : Beach Petroleum Ltd

Well : Fermat-1

Interval : 996.00 - 3587.02 meters

Created : 06/Jan/2009 8:29:28 PM



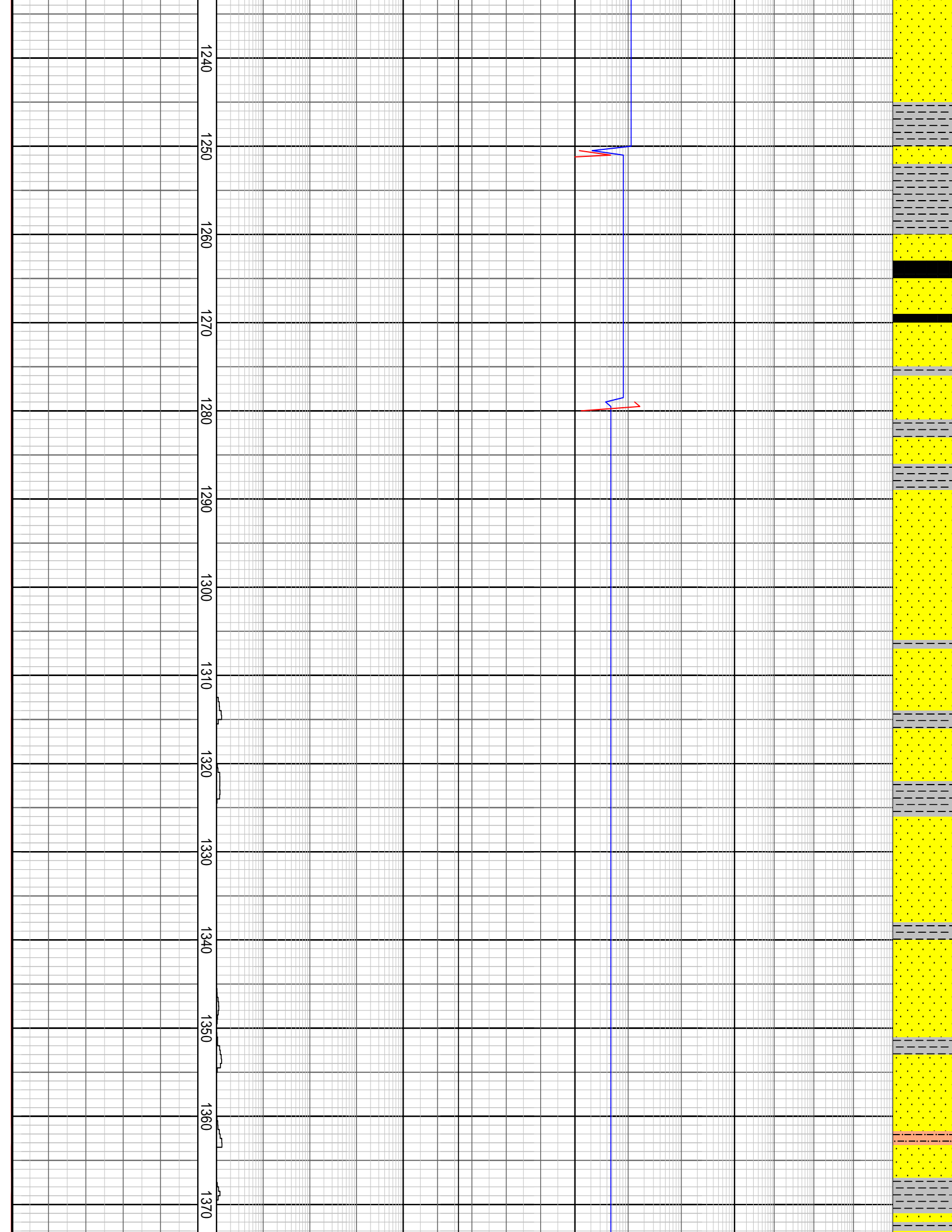
INTEQ

### GAS RATIO PLOT



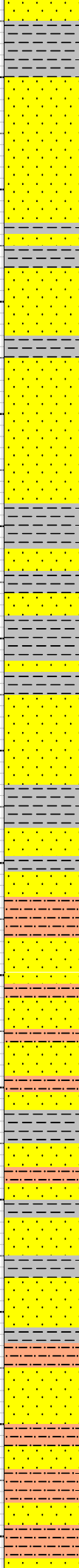
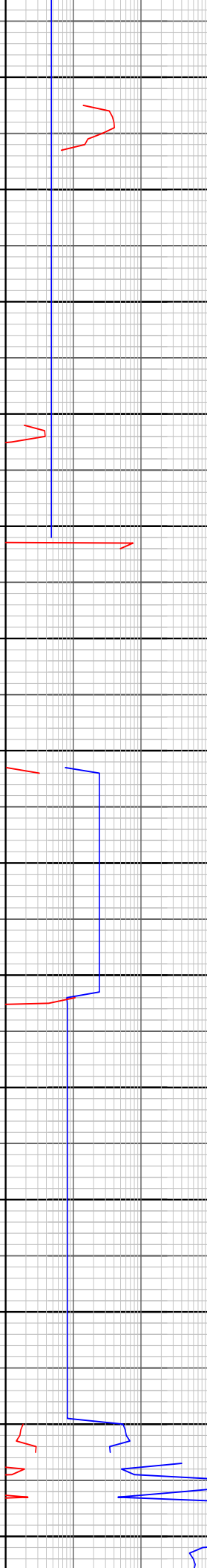
1100  
1110  
1120  
1130  
1140  
1150  
1160  
1170  
1180  
1190  
1200  
1210  
1220  
1230

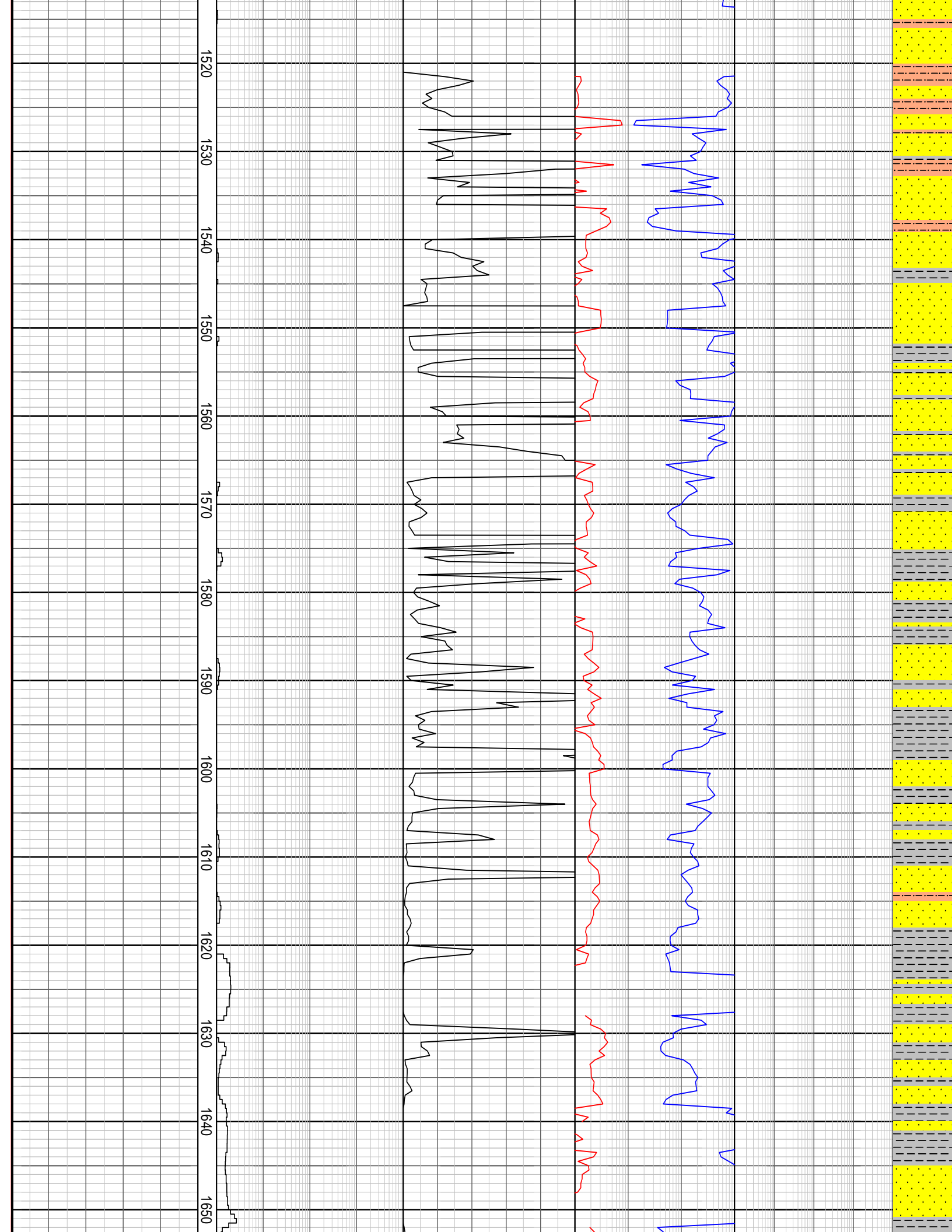


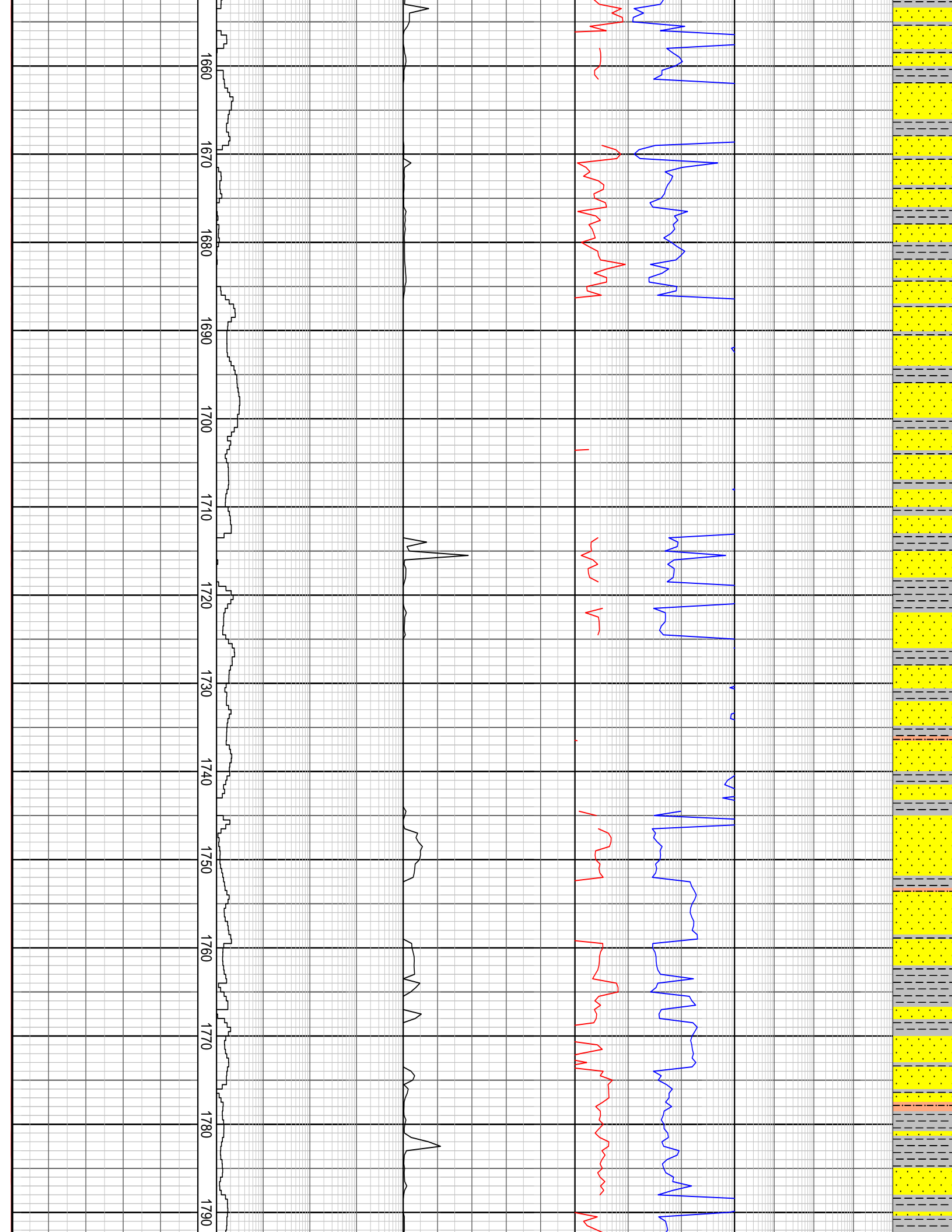


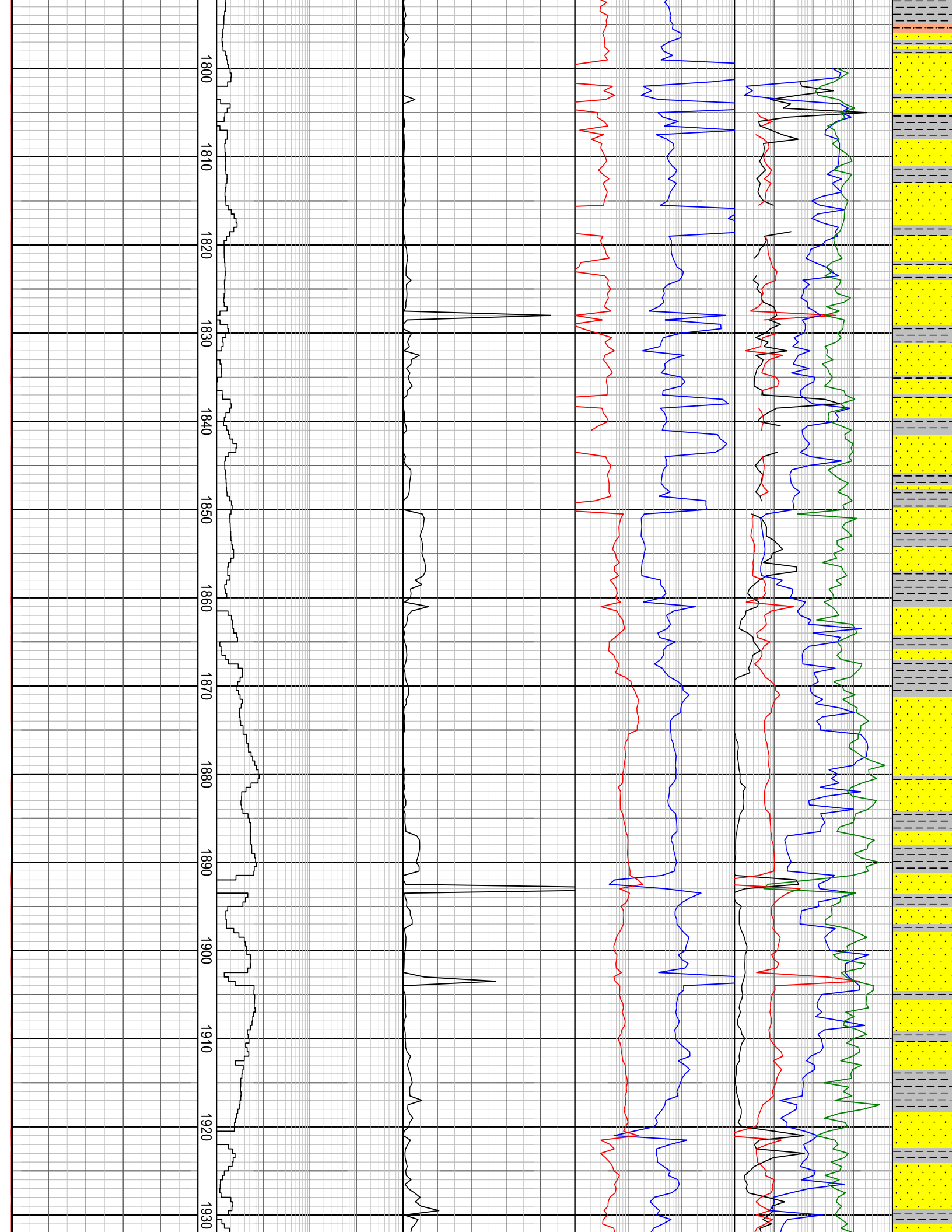
1380  
1390  
1400  
1410  
1420  
1430  
1440  
1450  
1460  
1470  
1480  
1490  
1500  
1510

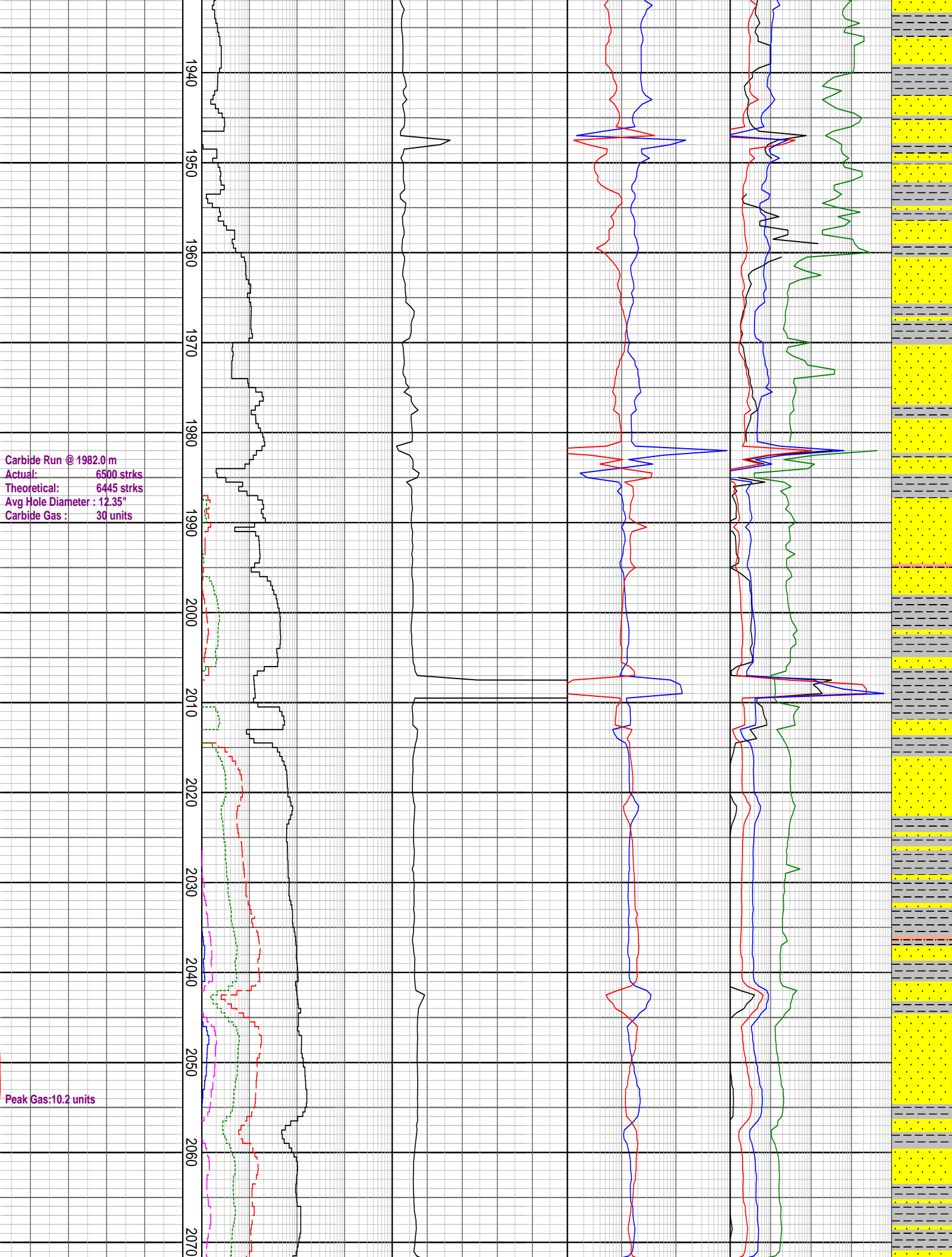
Carbide Run @ 1421.0 m  
Actual: 4825 strks  
Theoretical: 4811 strks  
Avg Hole Diameter: 12.29"  
Carbide Gas: 18 units



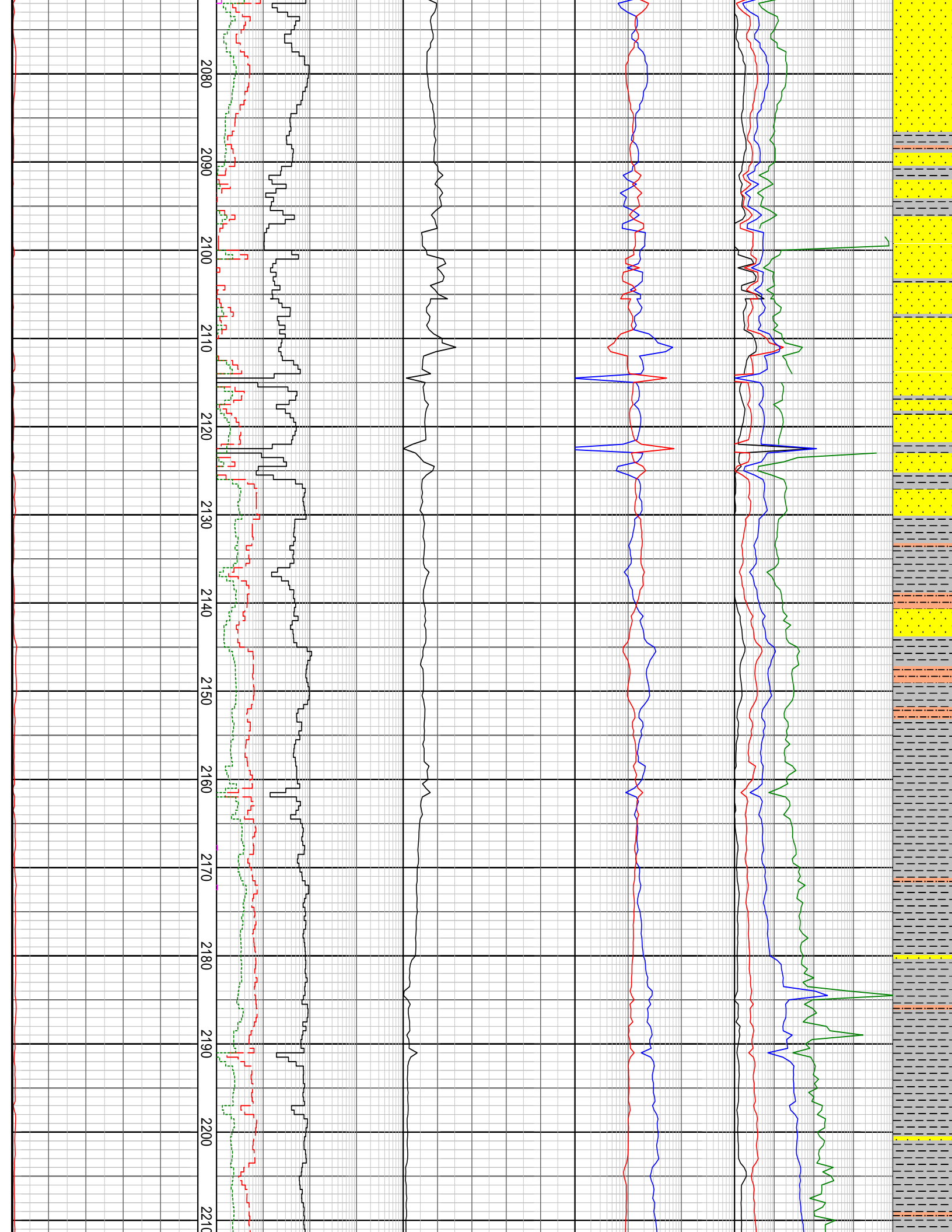


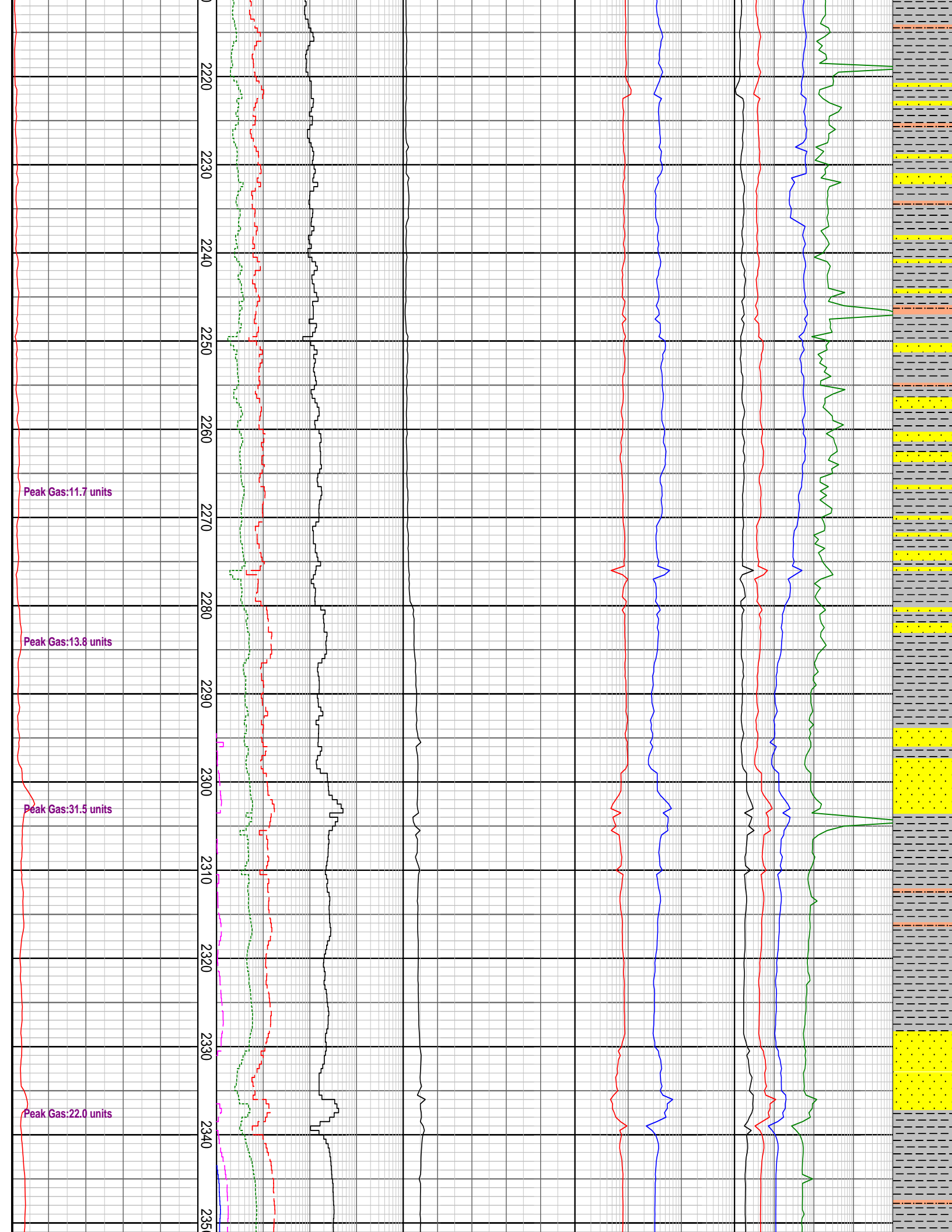


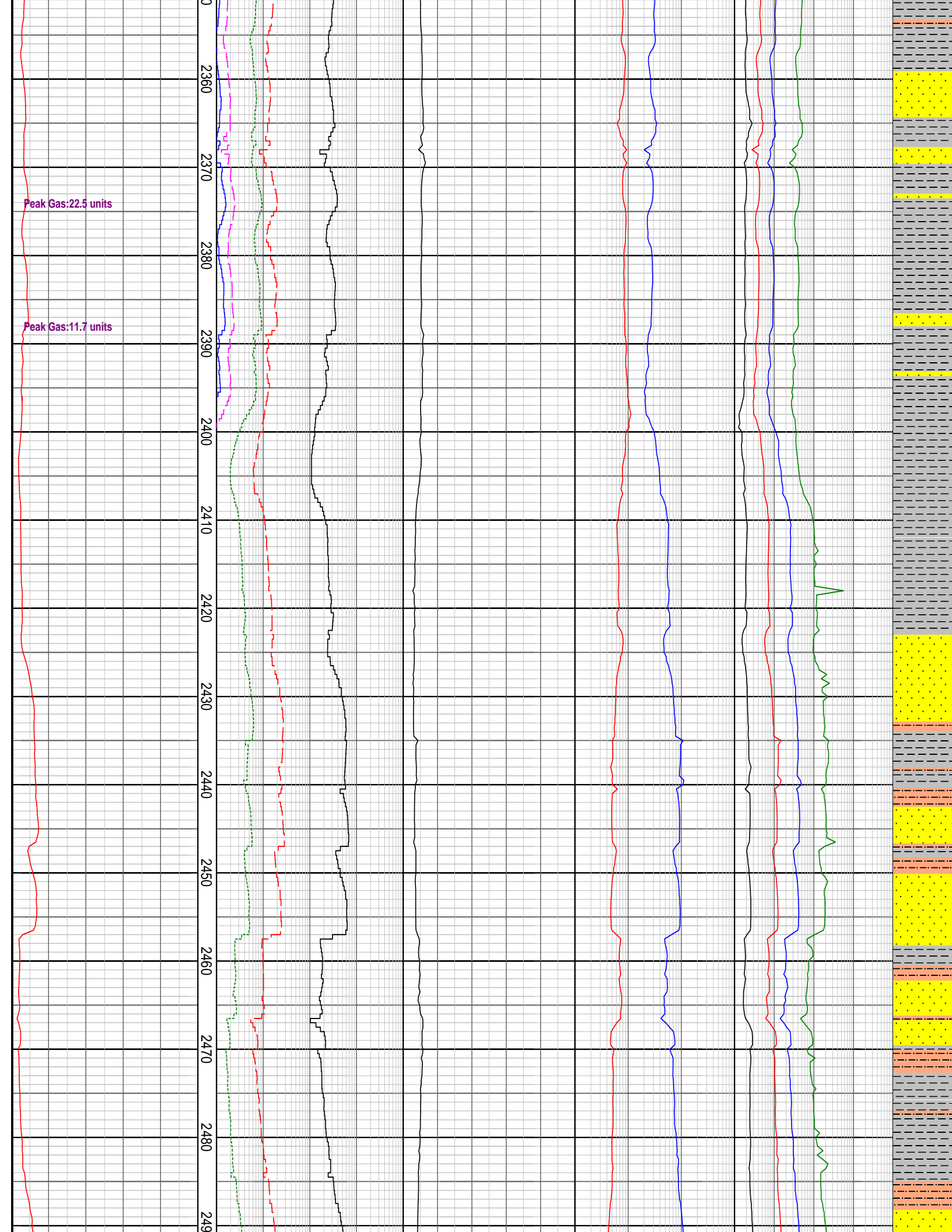


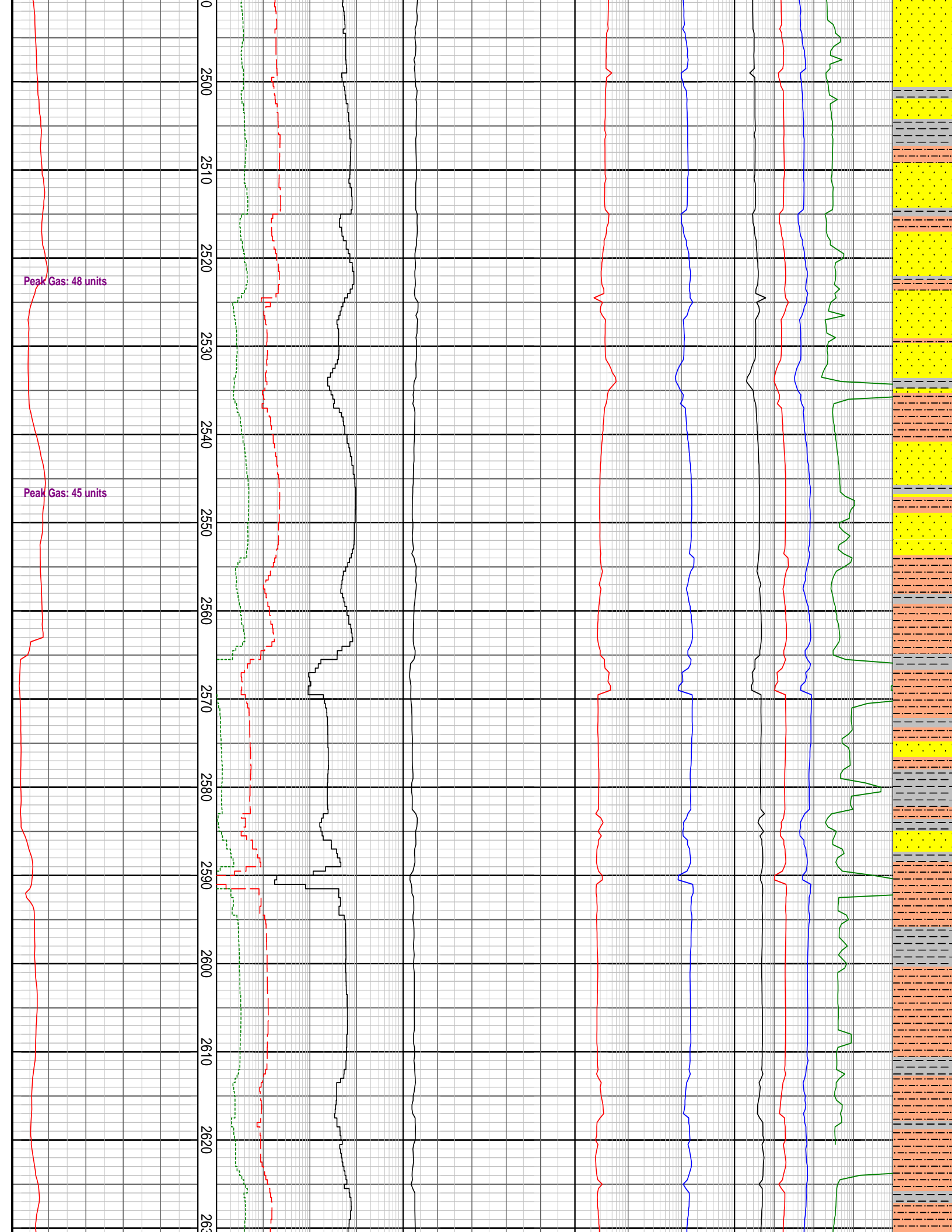


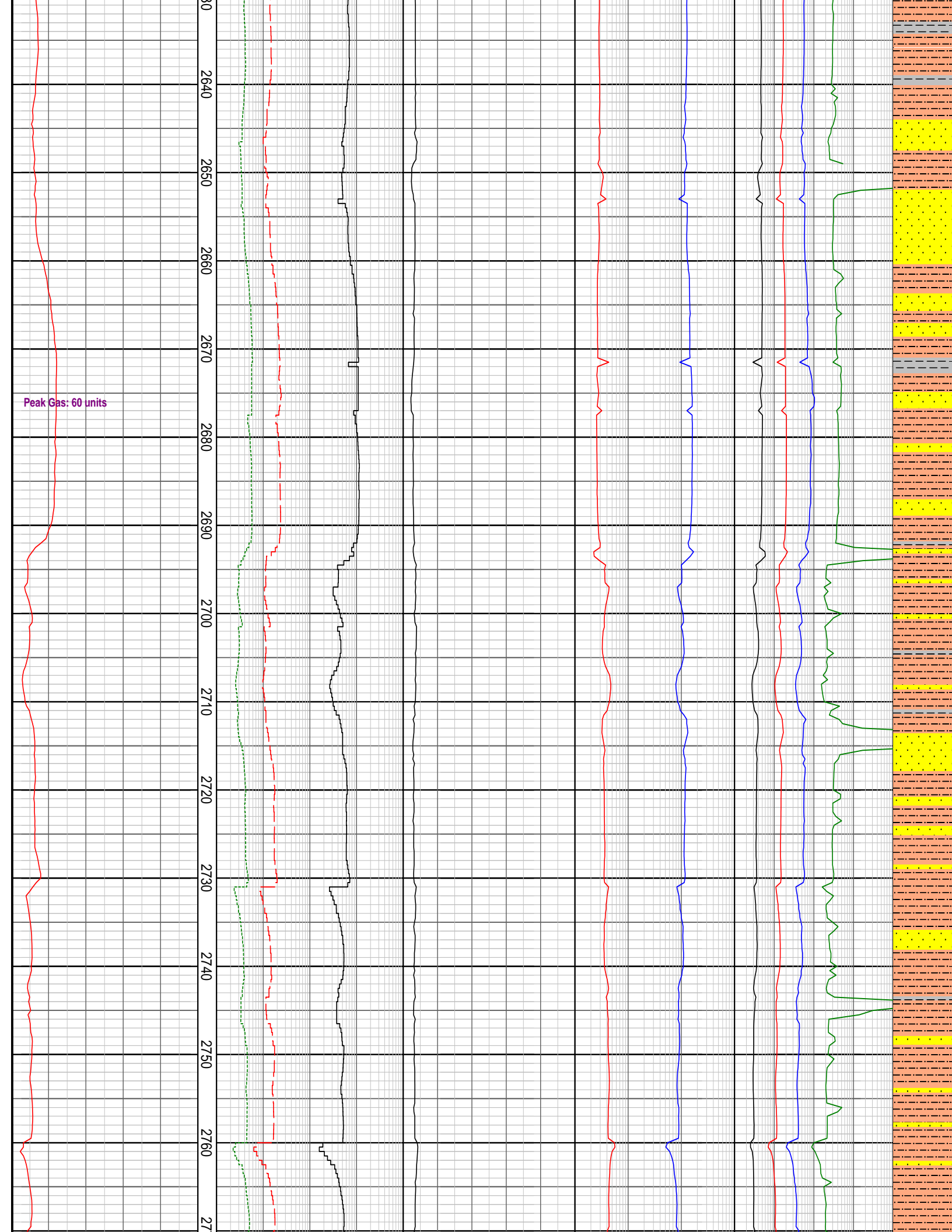


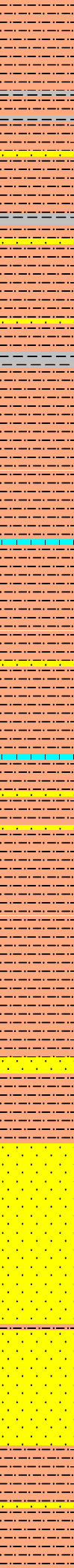
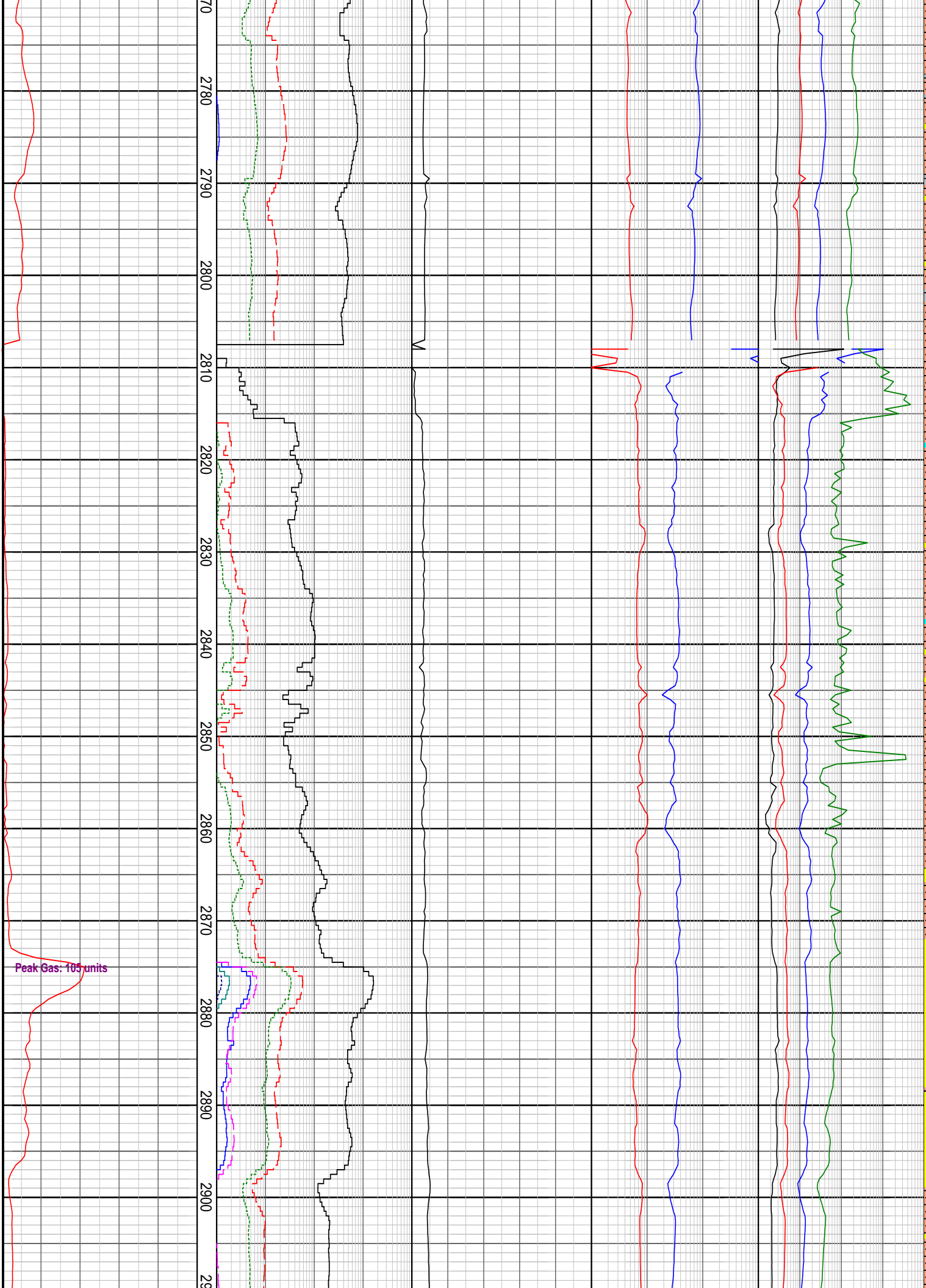


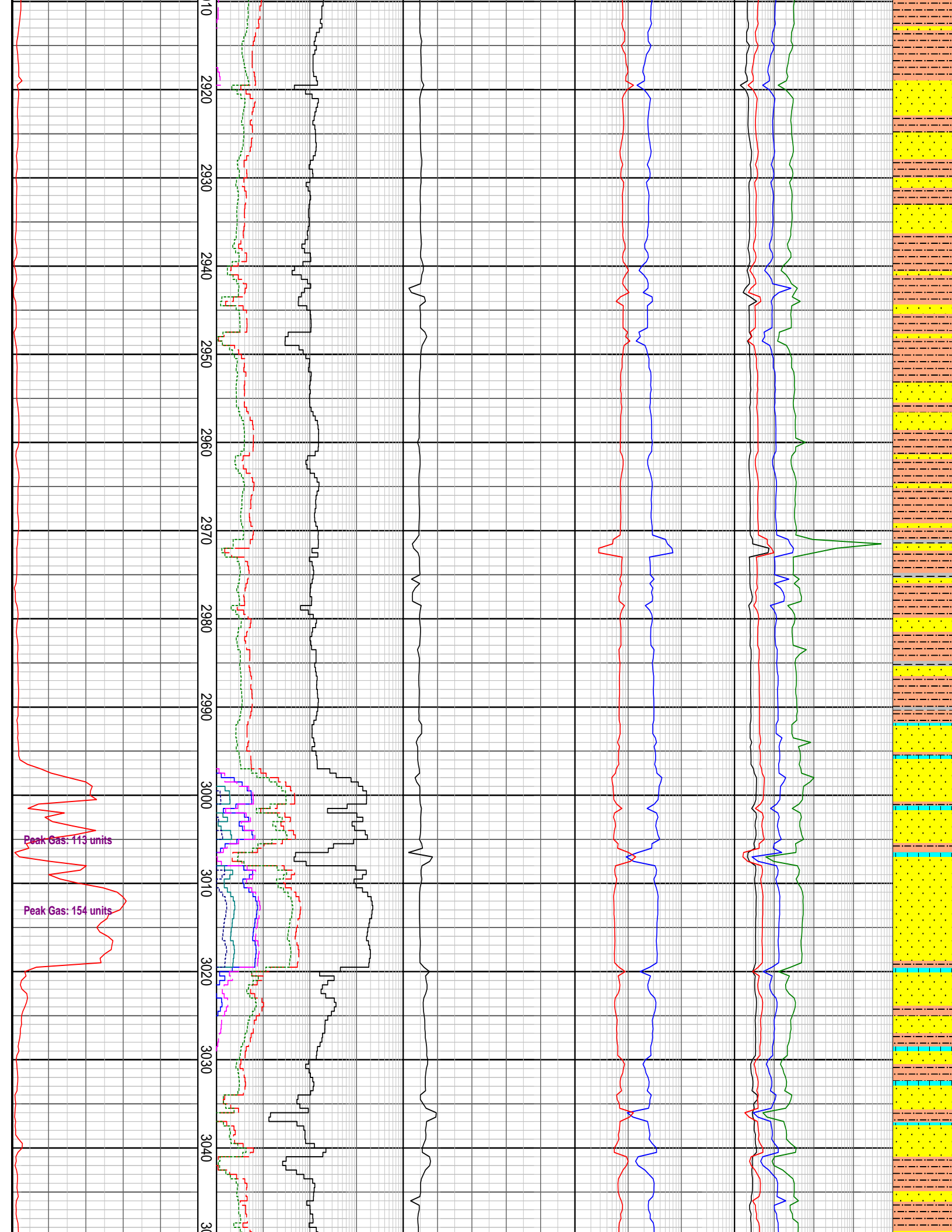


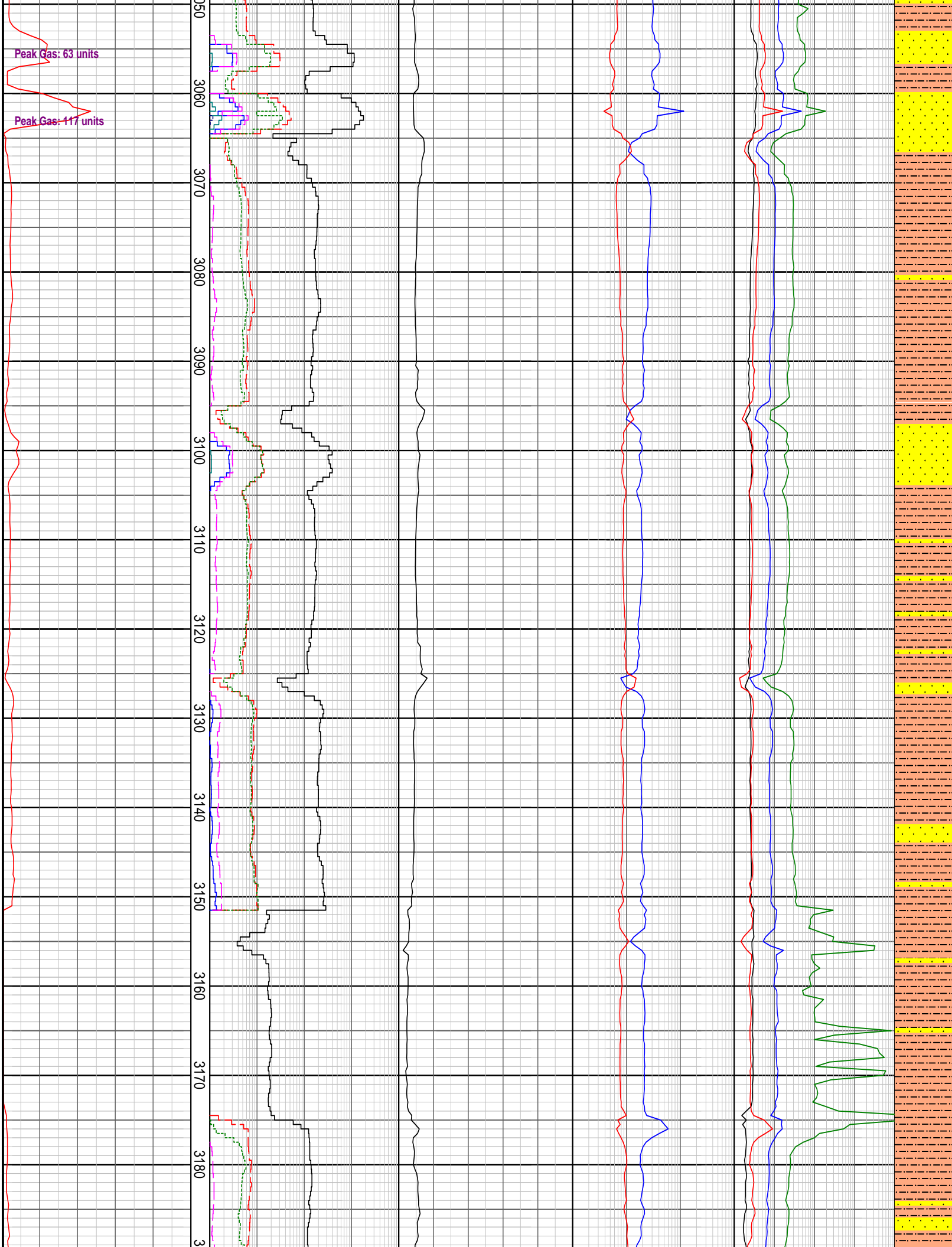




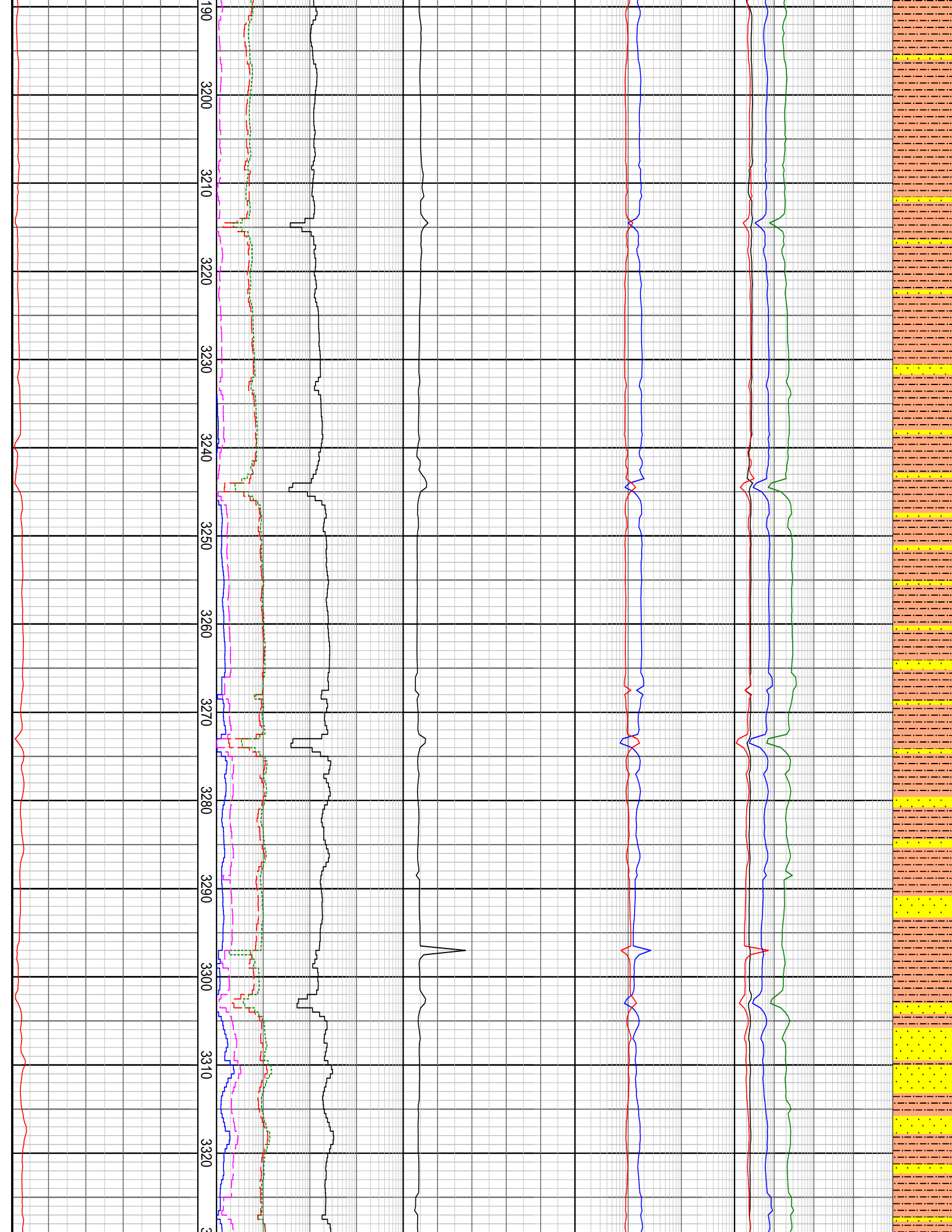


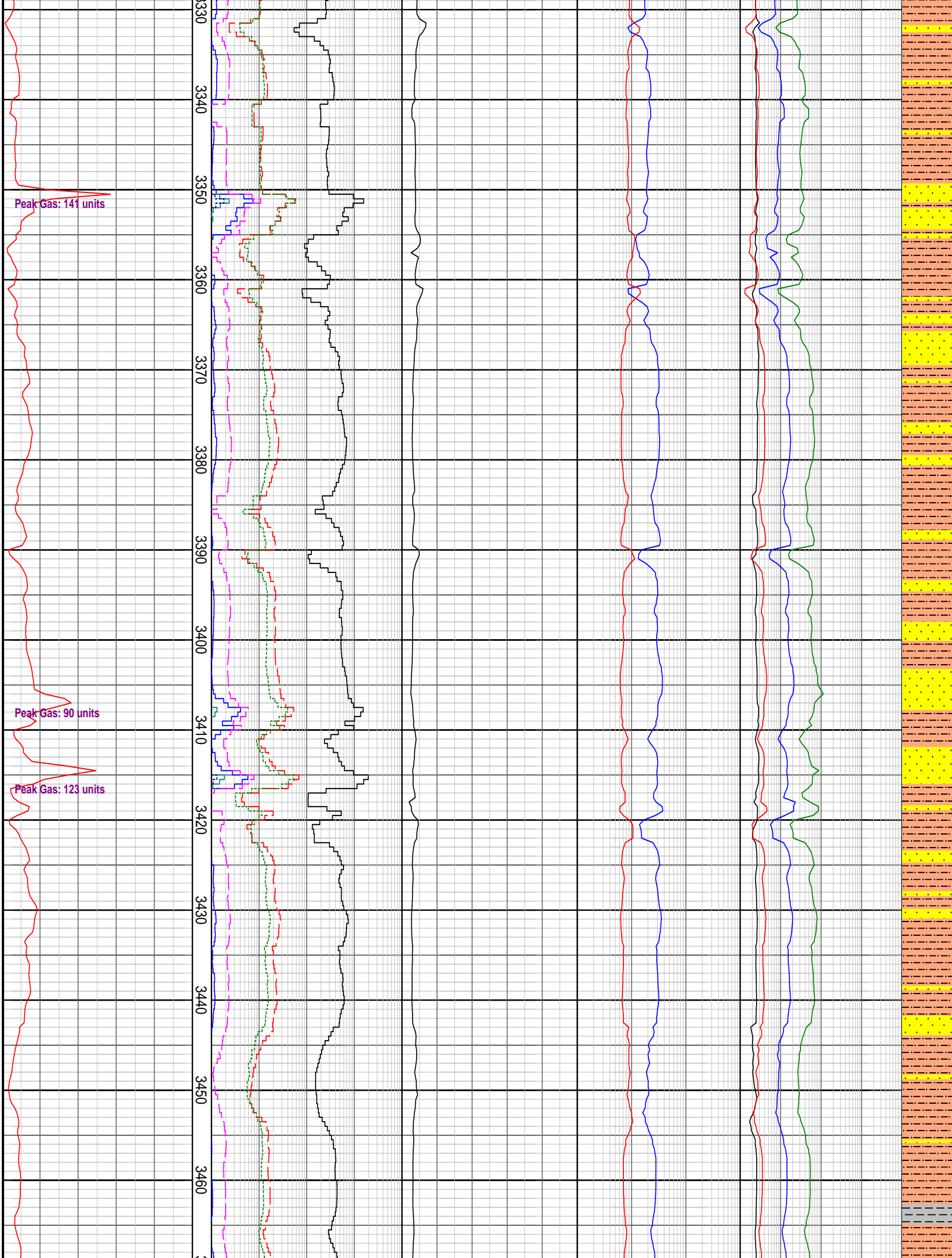














### GAS RATIO PLOT

TOTAL GAS	CHROMATOGRAPH	OCQ	RATIOS	C1 Ratios	INTERPRETED LITHOLOGY
DITCH GAS (unit)	C1 ppm	Unitless	LHR	C1C2	
50   100   150   200   250	C2 ppm	1   2   3   4   5	GWR	C1C3	
	C3 ppm			C1C4	
	iC4 ppm			C1C5	
	nC4 ppm				
MD meters 1:500					

10	iC5 ppm	100000
10	nC5 ppm	100000